

PAY

SYNAGOGUE PAY  Jonathan Block Friedman

LUSH
LIGHT
PRESS
© 2019



THE ICE IS MELTING



The sins of the fathers...

ICE MELTS SEAS RISE STORMS RAGE



No Noah's Ark ~~this time~~, only our hotter whole Earth. /planet Even the most desperate a raft of flotsam will be crushed and washed

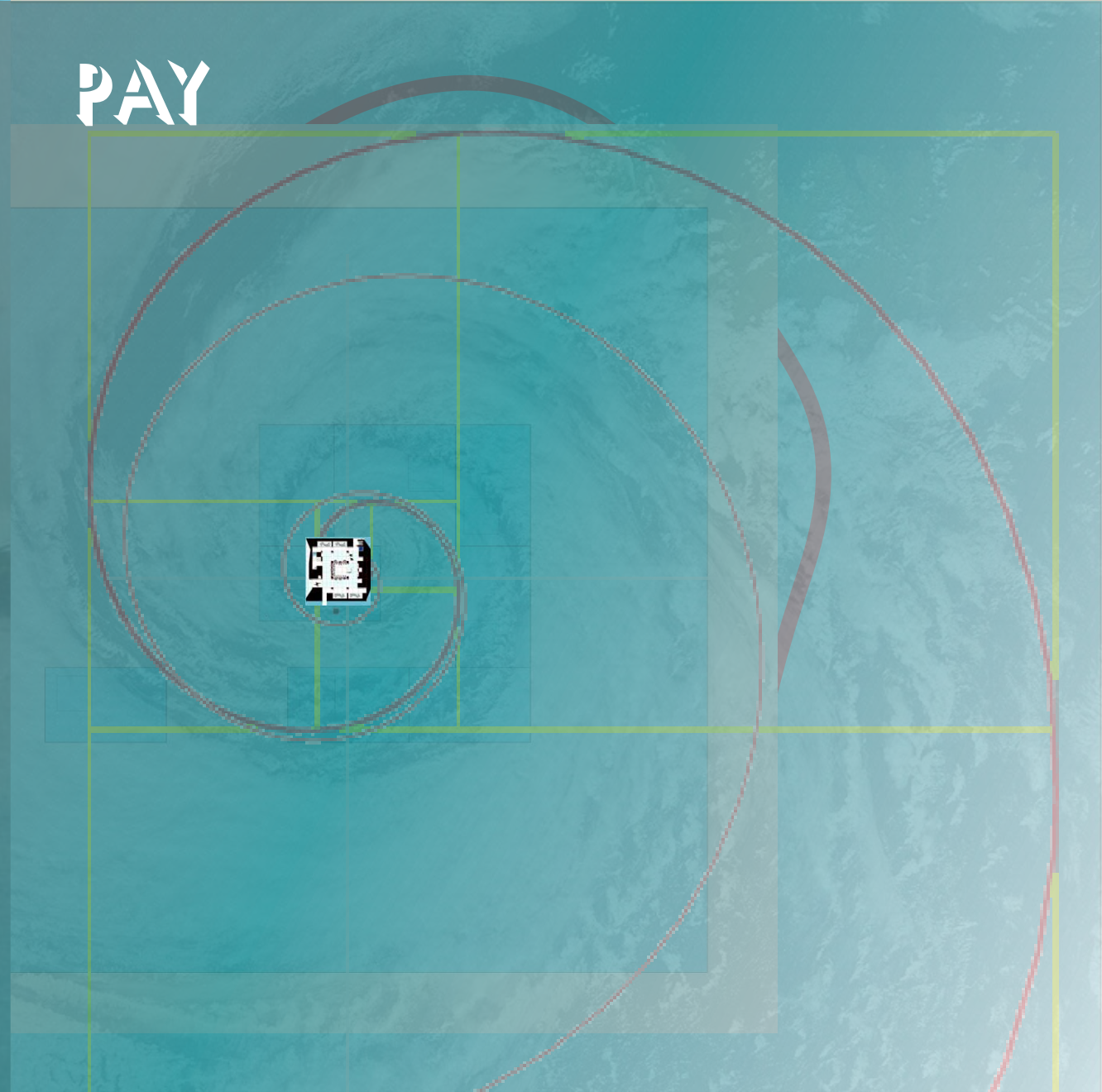


**NO ESCAPE THIS TIME FOR THIS
BLOATED MUSEUM OF TREACHERY**

PAY

WATERS RISE

STORMS COME



FLOOD WATERS RISE

An aerial photograph showing a residential neighborhood in South Miami that has been severely flooded. The water is a murky, greyish-brown color, covering the streets and yards. Numerous houses with light-colored roofs are visible, some partially submerged. Palm trees and other tropical vegetation are scattered throughout the area, some standing in the water. The overall scene depicts the aftermath of a significant weather event, likely a hurricane or tropical storm.

South Miami
[my area] is 5 to 10 feet above sea level

UNTIL: RISING WATER
DOES **NOT** RECEDE
ISLANDS AND ATOLLS
ARE ALL THAT IS LEFT



ONE MORE STORM
TREES ARE BATTERED



ALL THE TREES ARE GONE!
12 FOOT RISE IN SEA LEVEL
AND ALL IS UNDERWATER

soil is gone,
trees and plants
are gone, only
limestone bedrock
remains.

nothing but water--

all land
and vegetation

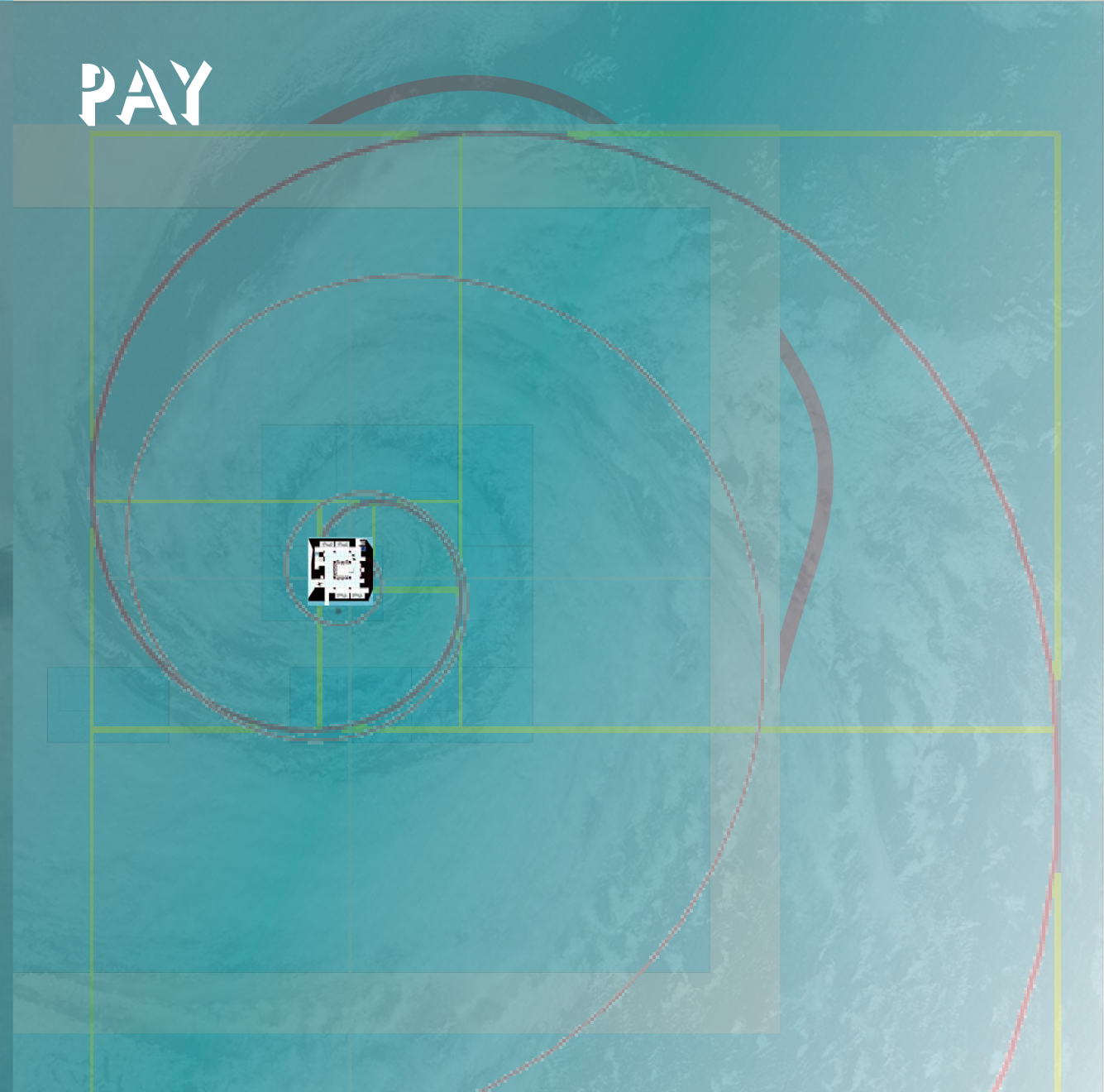
drown

PAY

A NEW
STONE AGE

WATER RISING

STORM COMES



NOTHING BUT WATER

1. THE PROBLEM

NOTHING BUT WATER

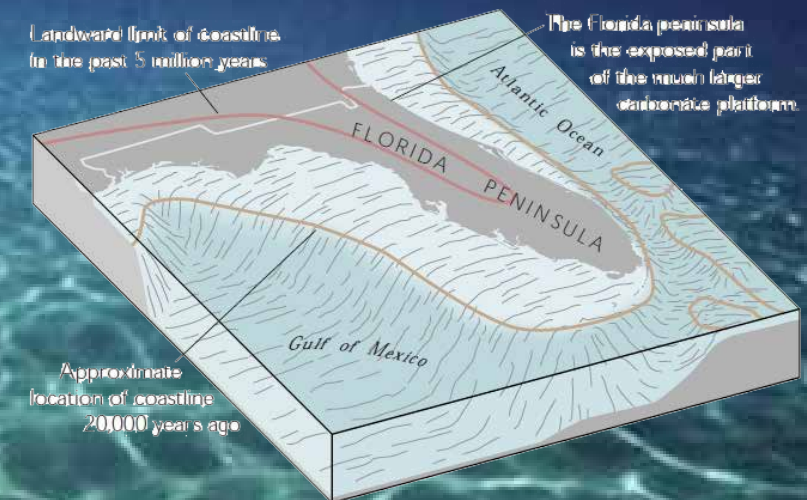
beneath the sea surface,
lies an old building material
Florida is a limestone shelf...
built up of the skeletons and shells
of ancient sea creatures

THUS:
a strategy --
dig for limestone,
build up new stone(s) into
lagoon of islands
and perimeter mass

at the same time, the dig
becomes new shaded pool,
cooler, can make a new reef?
cut equals fill! solid void.

**SEABED OF FLORIDA IS LIMESTONE
FOSSIL COMPRESSED SHELL (?)**

and Florida is virtually all limestone



NOTHING BUT WATER

2. THE CONCEPT

A SOLUTION

A PROPOSAL

HARD WORK!!

NO SCUBA FOR A LONG TIME
NO ELECTRICITY!! NO POWER!!

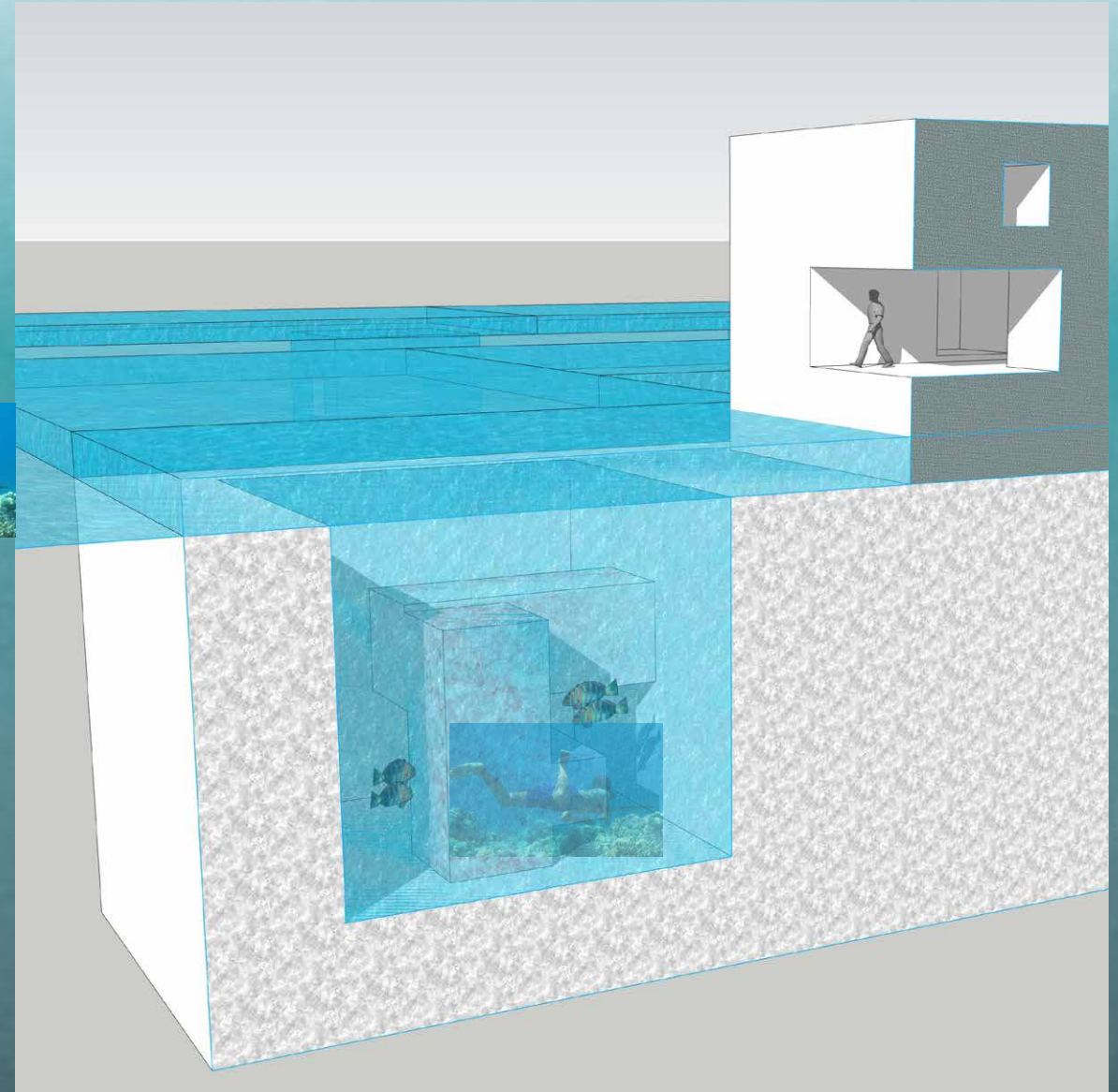
THUS:

a strategy --
dig for limestone,
build up new stone(s) into
lagoon of islands
and perimeter mass

at the same time, the dig
becomes new shaded pool,
cooler, can make a new reef?
cut equals fill! solid void.

a 36 foot cube!?? the phi of the square base
 $36 = 3 \times 12;$
 $= 4 \times 8 + 4 = 3 \times 8 + 12 = \dots !! \text{Le Modulor!!}$
or 31'5" and 50' 10" = Modulor Blue

reef is negative of cave (interior of house)



3. THE MEANS

Spine L4 bone shaped Voronoi micro structure object.
Great for science / medical demonstration.
Perfect for 3D printing.

-bone micro structure
-spine L4 bone
-3D print

WITH PERFECT CUTTING CONTROL AND A REMNANT OF
PARAMETRIC DESIGN CAPABILITY, THE STONES CAN BE MADE
EXTREMELY HOLLOW, WHILE KEEPING STRUCTURAL INTEGRI-
TY-- JUST AS BONES DO....

FRACTAL ITERATIONS MAY APPROACH NEARLY INFINITE SUR-
FACE WITH INFINITESIMAL MASS-- LIKE SPONGES.

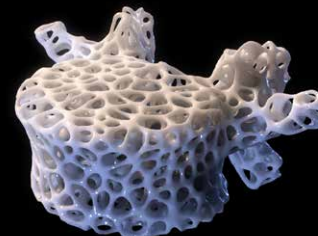
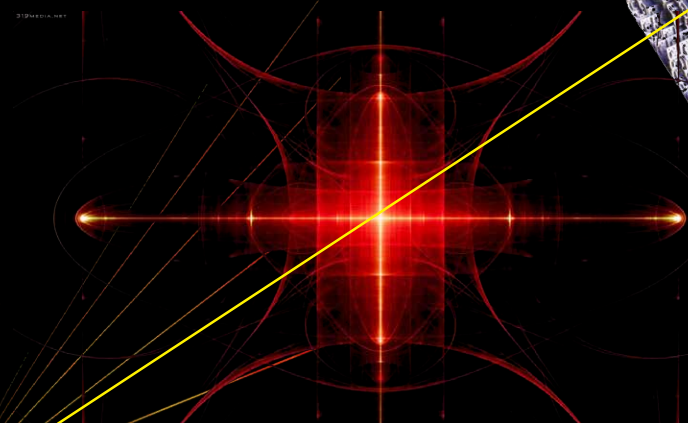
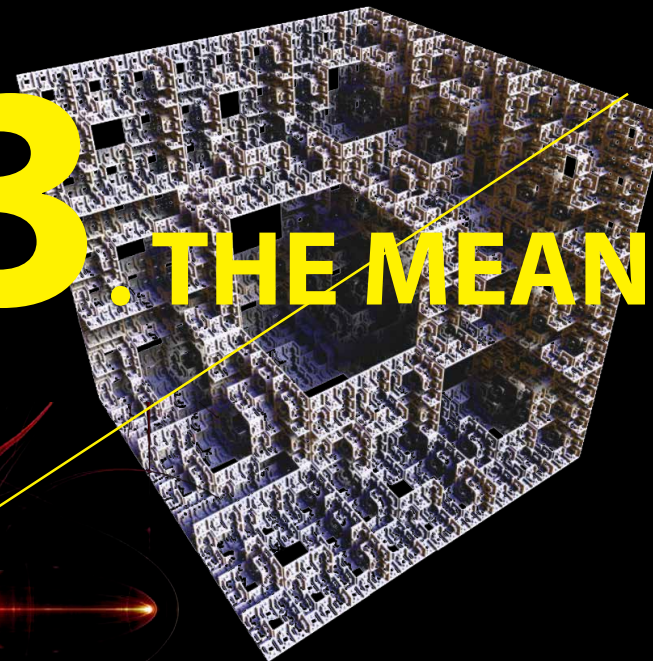
LASER CUTTING AND CARVING
ALSO LASER FUSION WELDING (OF ROCK!)
INSTEAD OF MORTAR FOR LIMESTONE BLOCKS???

THE CONCEIT (YES "CONCEIT," NOT "CONCEPT")
IS THAT A PERFECT 3D STONE CUTTING TOOL IS COMMONLY
AVAILABLE, AND IS THE SOLE REPOSITORY OF TODAY'S
HIGH TECHNOLOGY, THE ONE TOOL THAT SURVIVES
THE HYDROCAUST-- THE WET HOLOCAUST--
THE "WET BURN" THE NEW FLOOD???

THE STONE IS ALSO "PURE", WITHOUT GRAIN, A PERFECT AND
FLAWLESS BUILDING MEDIUM, WITHIN ITS LIMITS.
NOT IMPOSSIBLY LONG SPANS-- BUT POSSIBLY NEAR-PERFECT
JOINTS, AS WITH THE INCA--



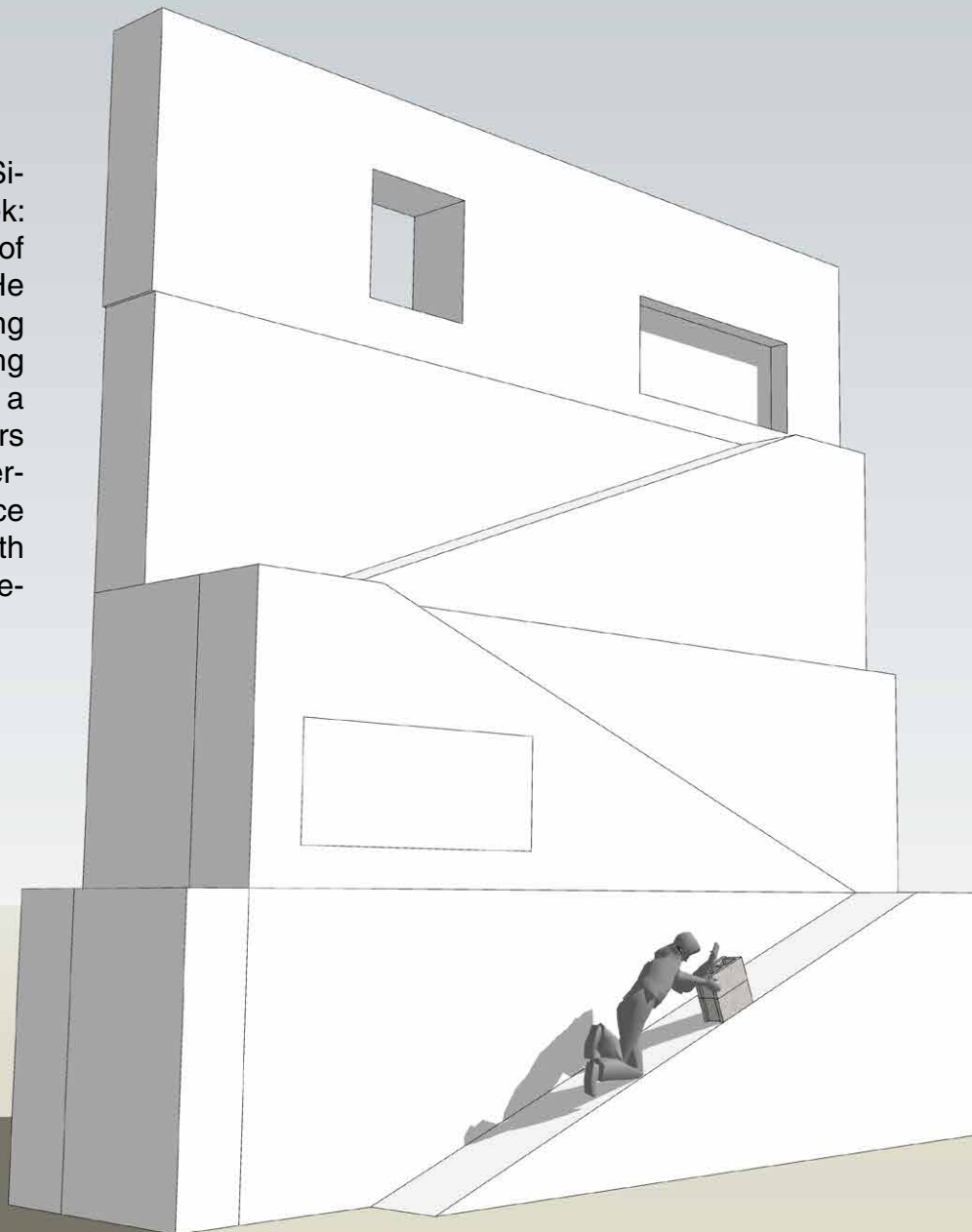
3. THE MEANS



how to make stones
light and strong as bones??

In Greek mythology Sisyphus or Sisyphos (/s s f s/; Ancient Greek: Σίσυφος Sísuphos) was the king of Ephyra (now known as Corinth). He was punished for his self-aggrandizing craftiness and deceitfulness by being forced to roll an immense boulder up a hill only for it to roll down when it nears the top, repeating this action for eternity. Through the classical influence on modern culture, tasks that are both laborious and futile are therefore described as Sisyphean (/s s fi n/)[2]

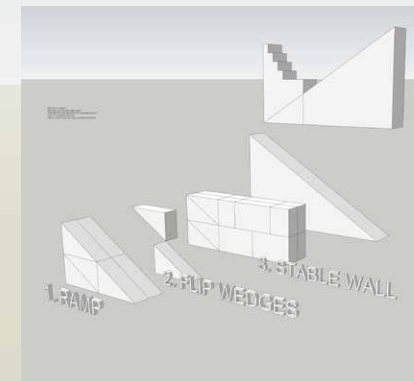
BLOATED MUSEUM OF TREACHERY



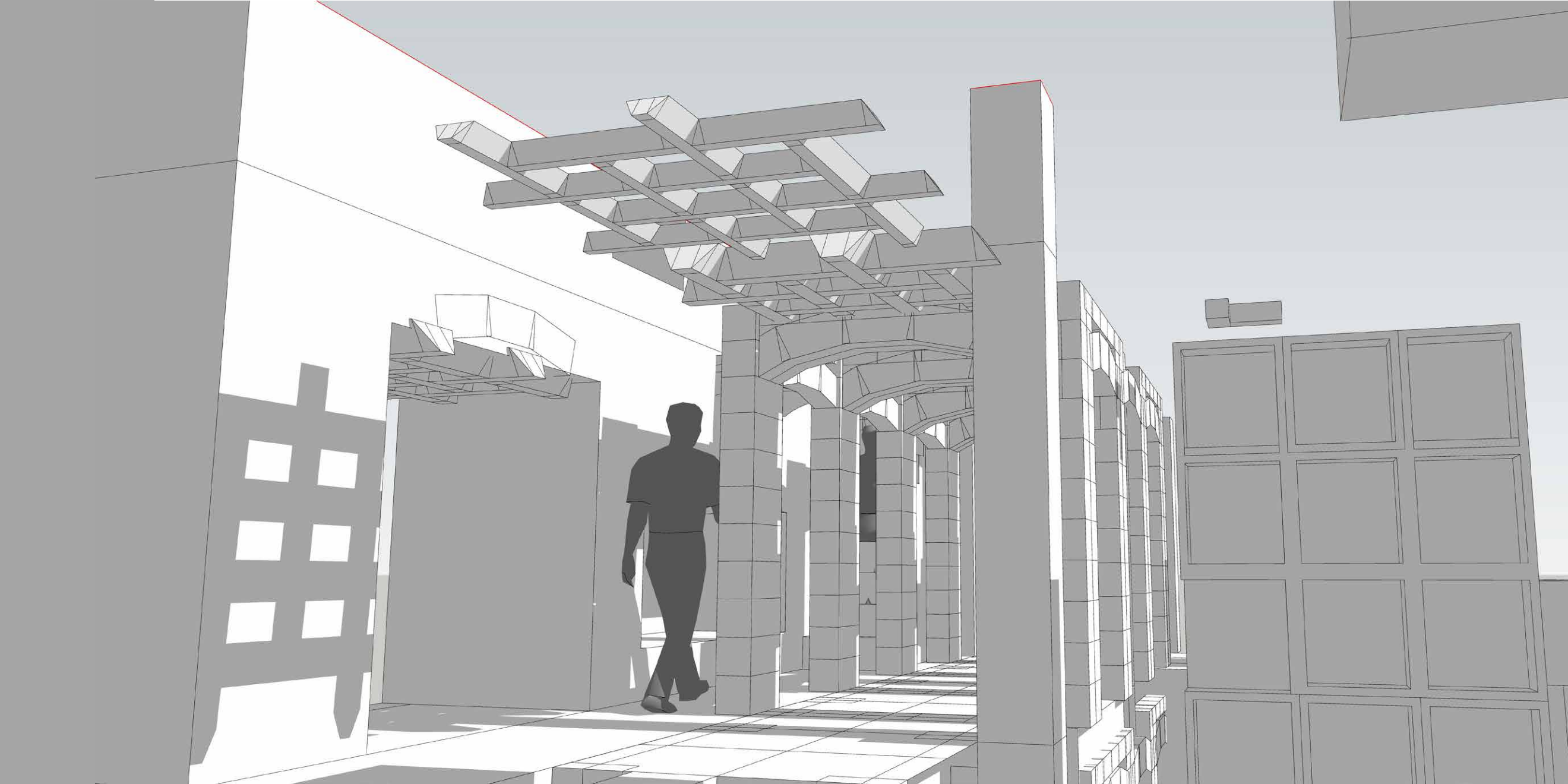
HARD WORK!! EXTRA HARD TO GO UP

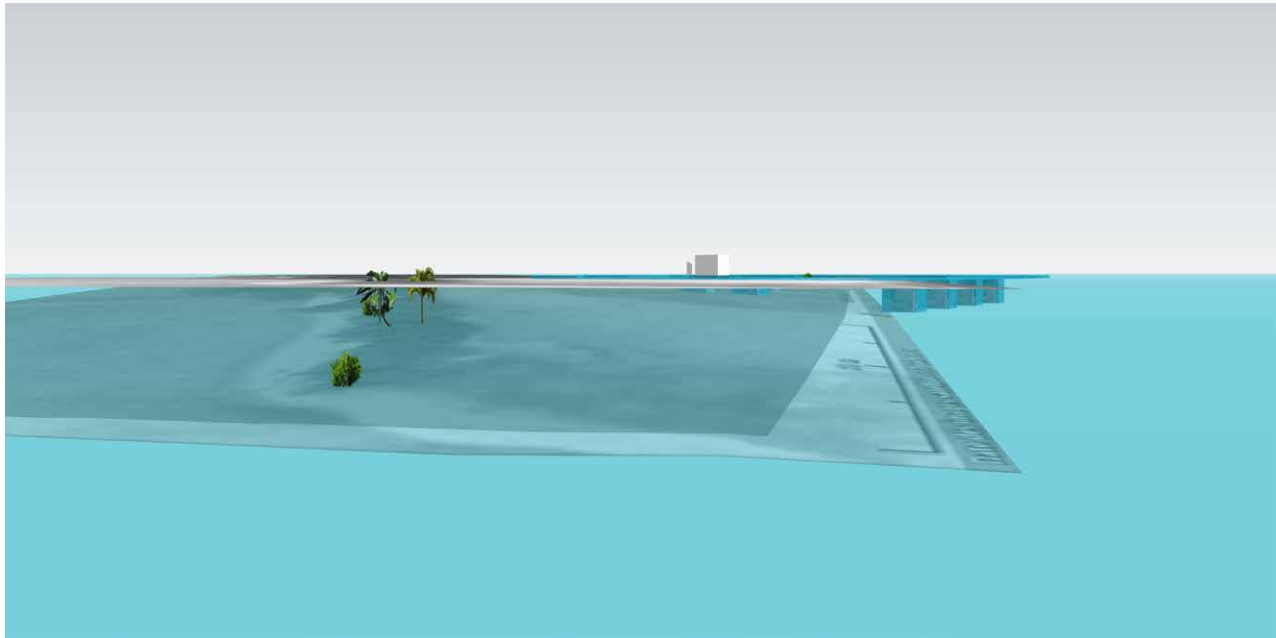
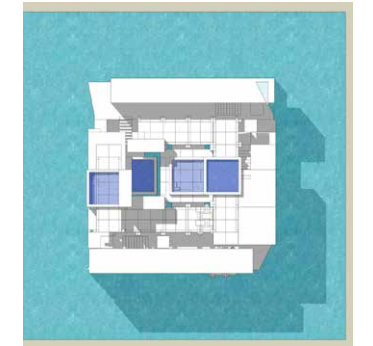
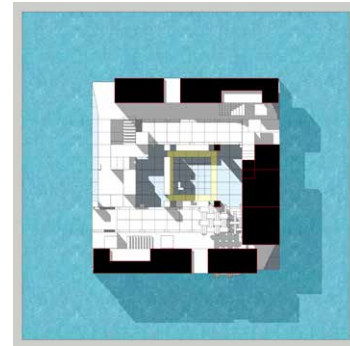
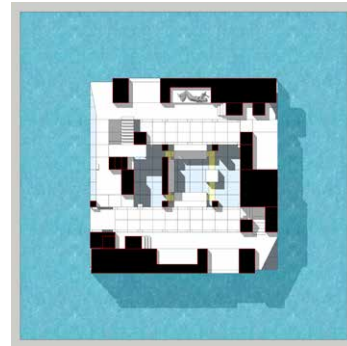
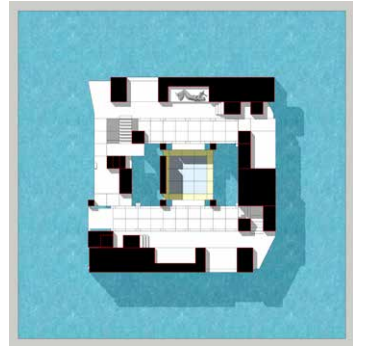
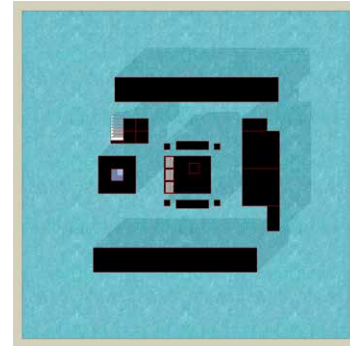
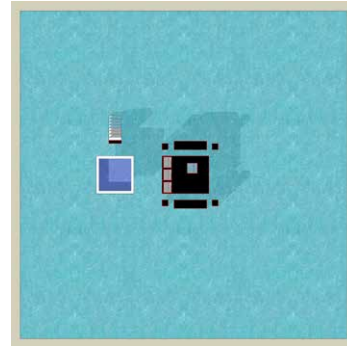
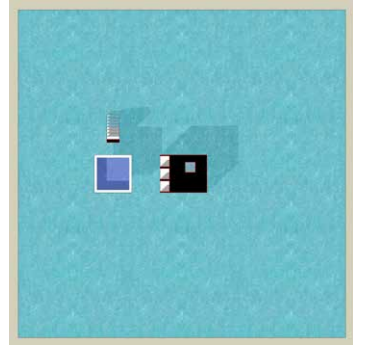
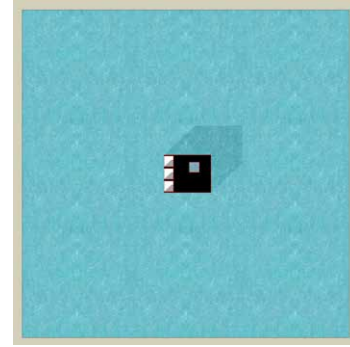
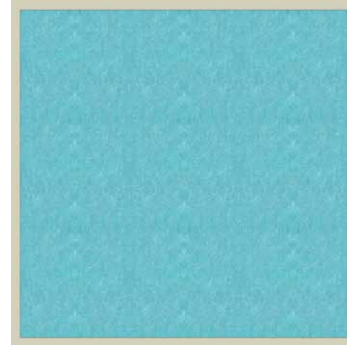
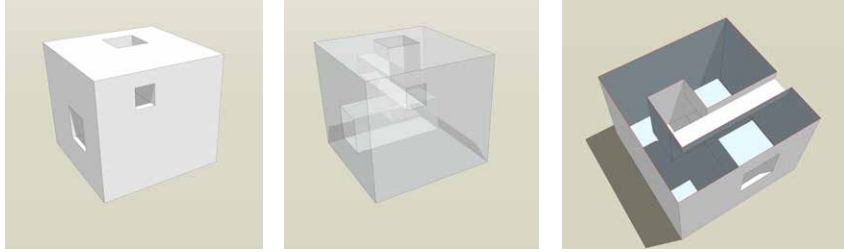
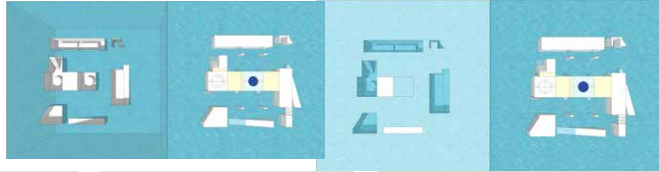
The gods had condemned Sisyphus to ceaselessly rolling a rock to the top of a mountain, whence the stone would fall back of its own weight. They had thought with some reason that there is no more dreadful punishment than futile and hopeless labor.

Albert Camus

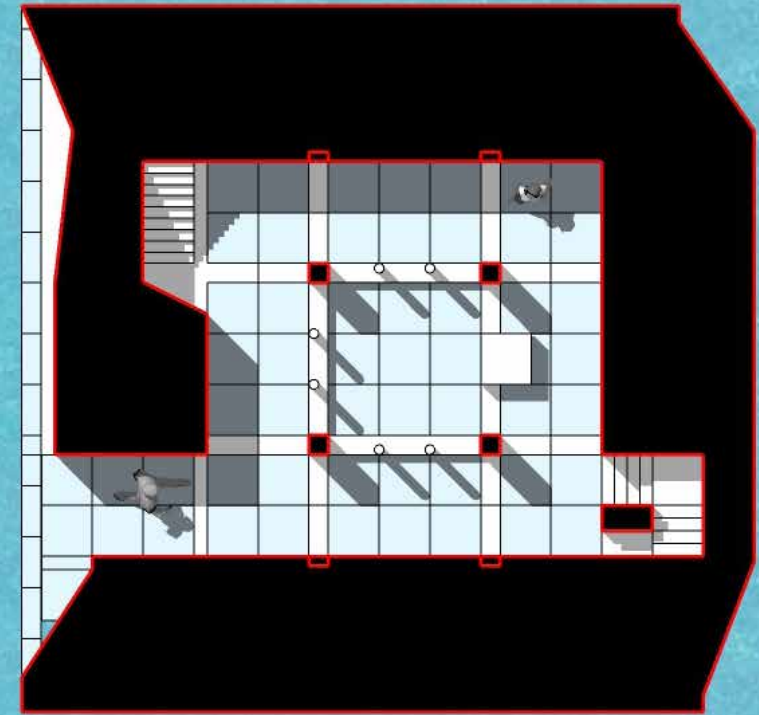
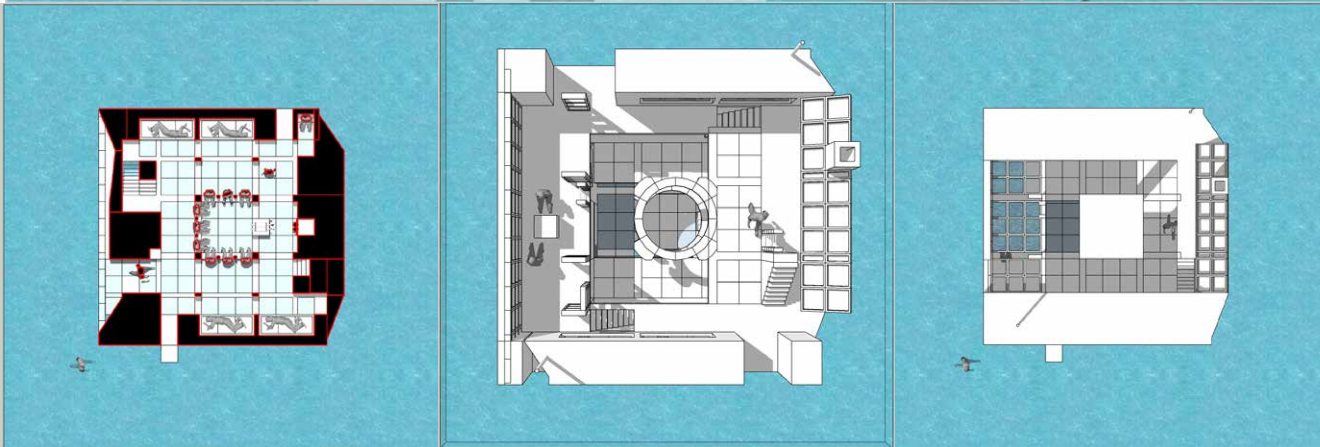


PROOF OF CONCEPT:
INCLINED HALF BLOCKS MAKE RAMP
THEN REMOVE AND REPLACE WITH SQUARED BLOCKS
ONLY AT INCLINE INTERFACE.
MAKES STEADY NON SLIP WALL, ELIMINATES SHEAR



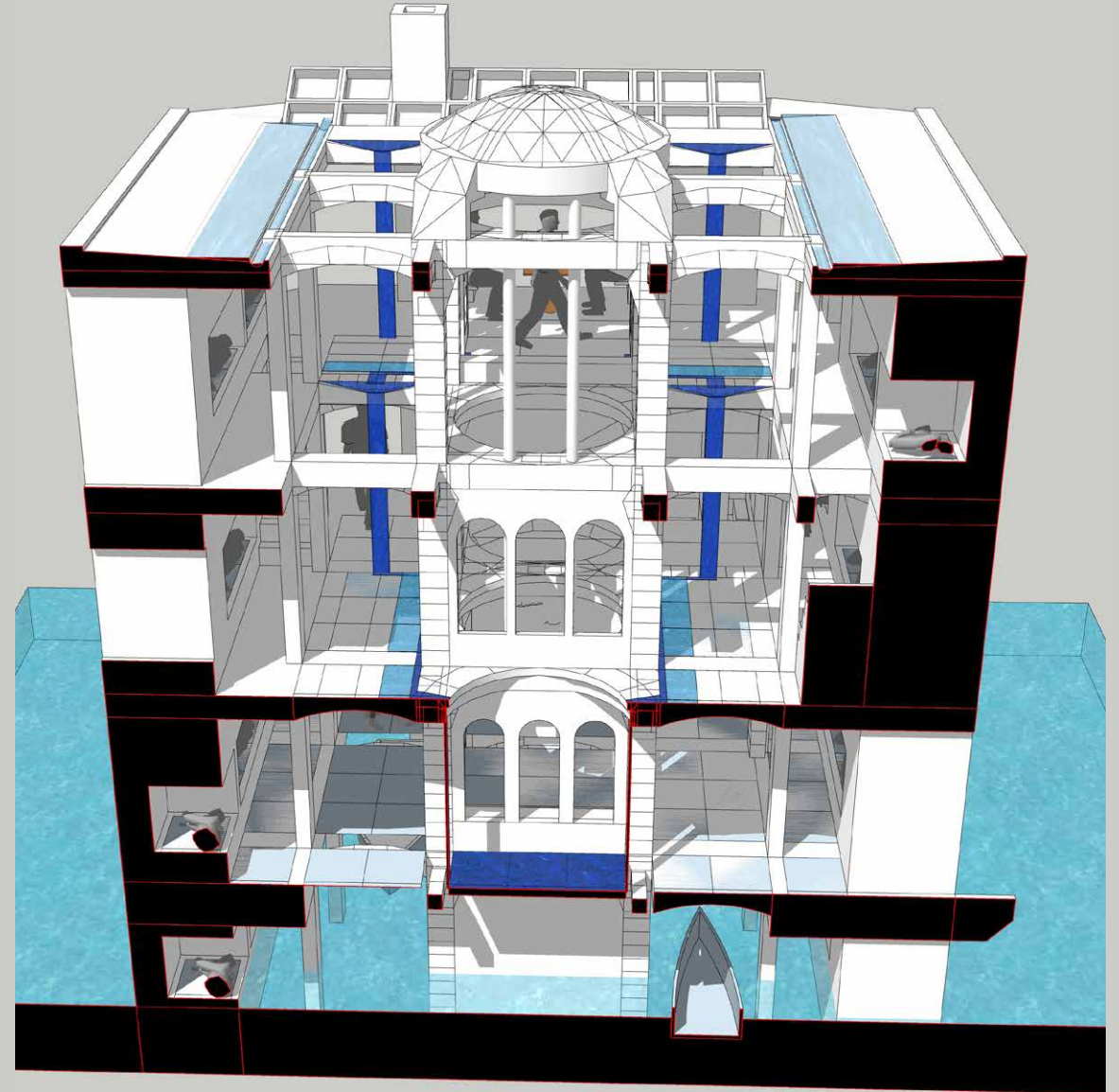
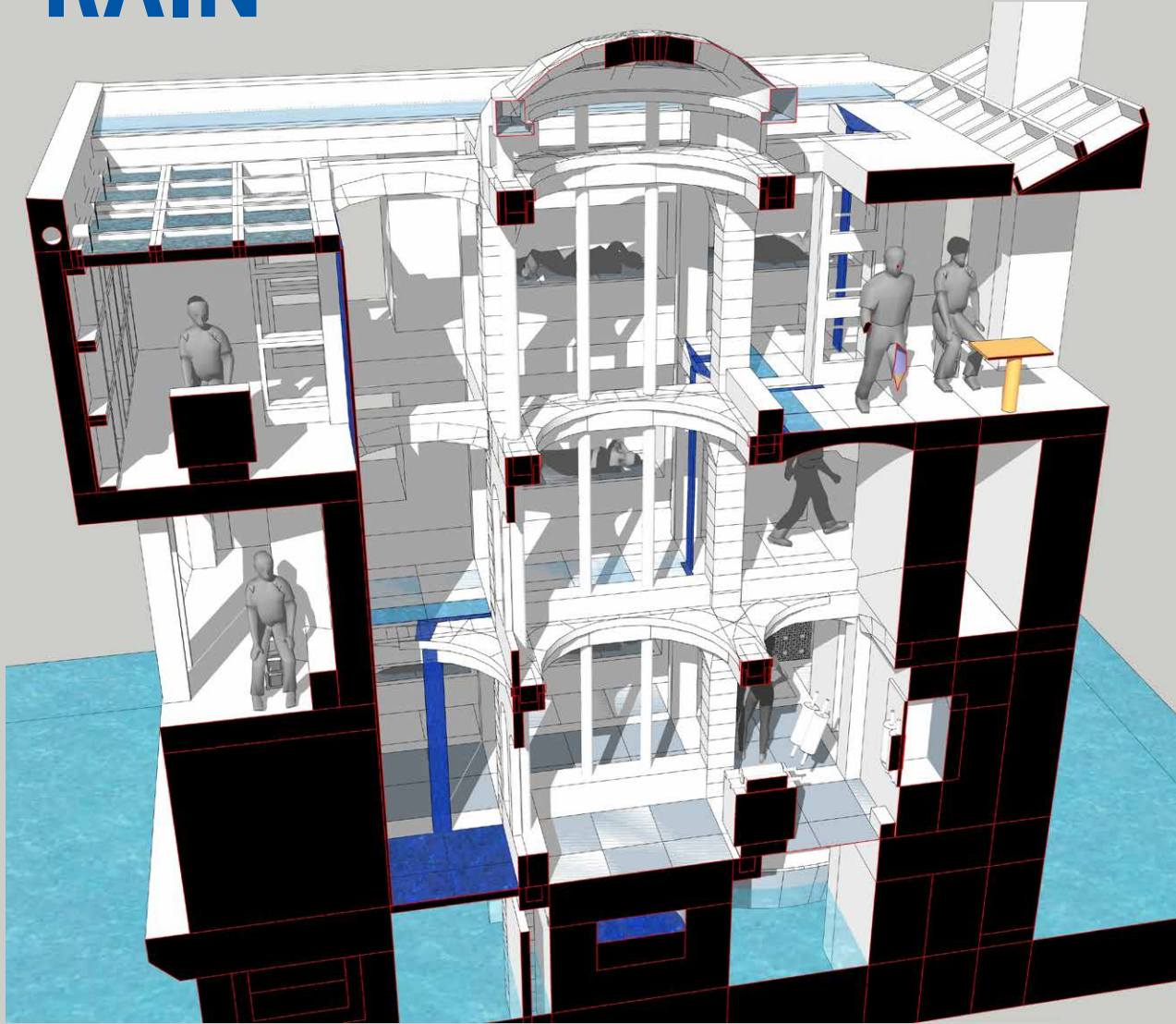


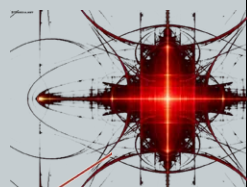
6. ARCHITECTURE



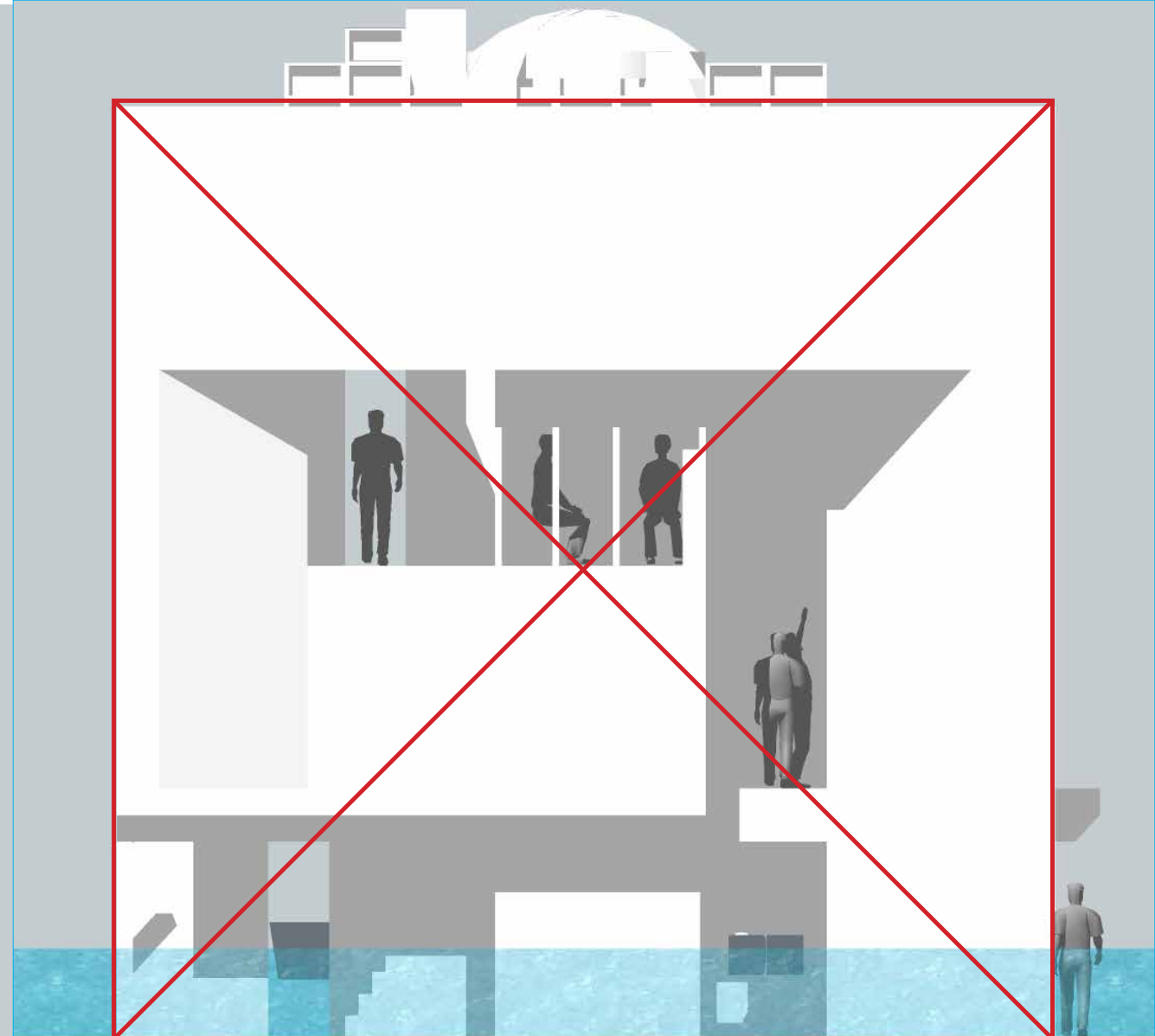
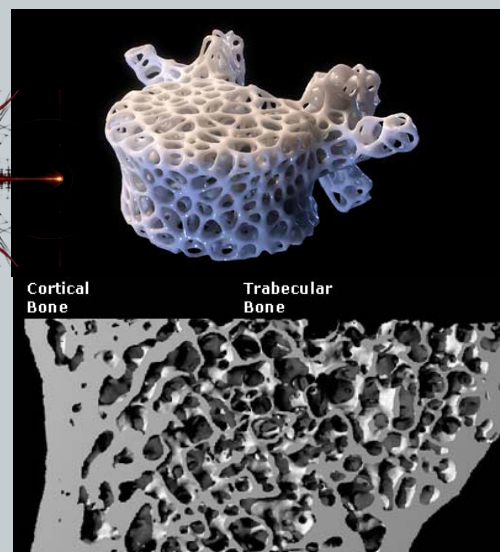
**ark faces NORTH not East
(lost) ice worship**

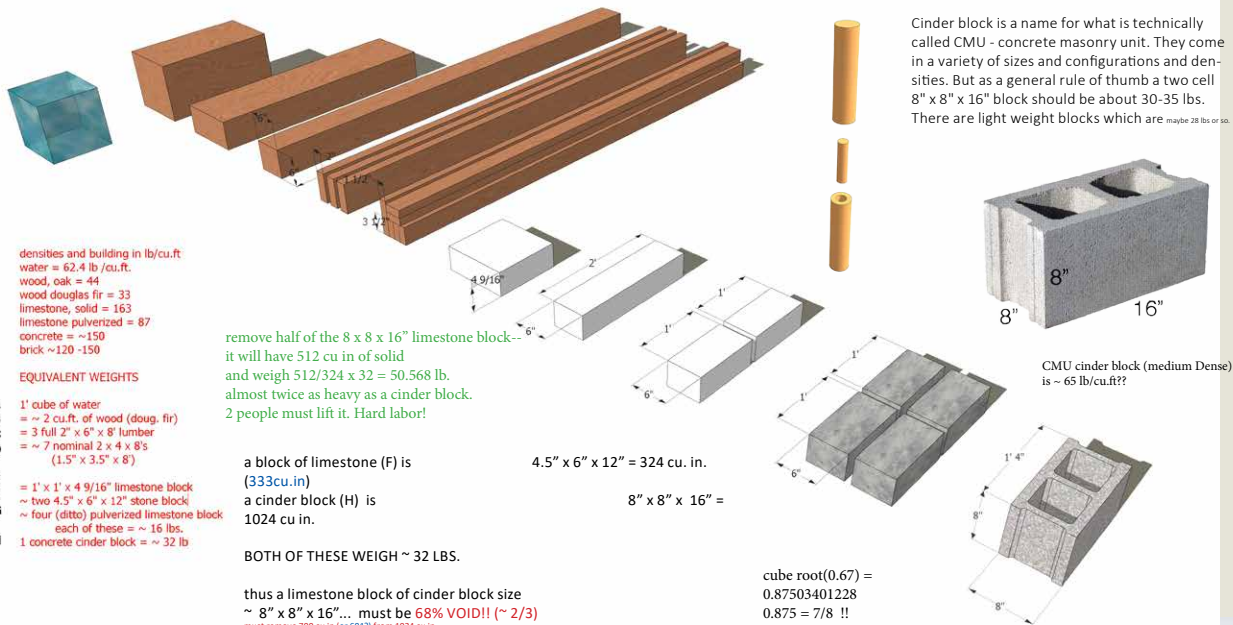
RAIN





A red Swiss Army knife with a white cross logo on the handle. The knife is open, showing a pair of pliers and a saw blade. The handle has a textured, possibly wood-grain or marbled, pattern. The knife is positioned diagonally across the frame.





from PLAYTIME 2.3. SKP (JBF)

NOTE: ALL BLOCKS HERE SHOWN
 AS PRE-FRACTAL, ie solid no voids

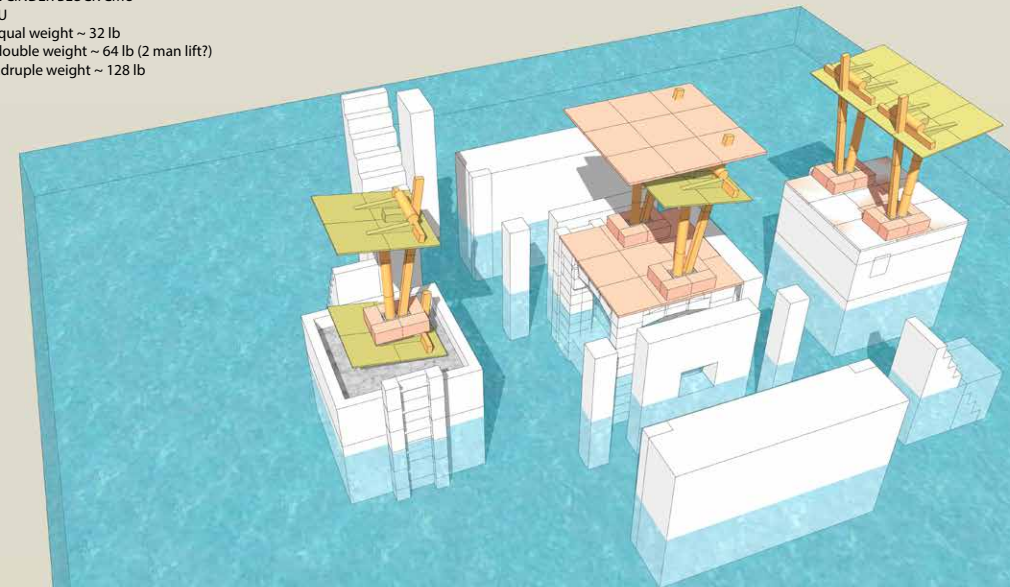
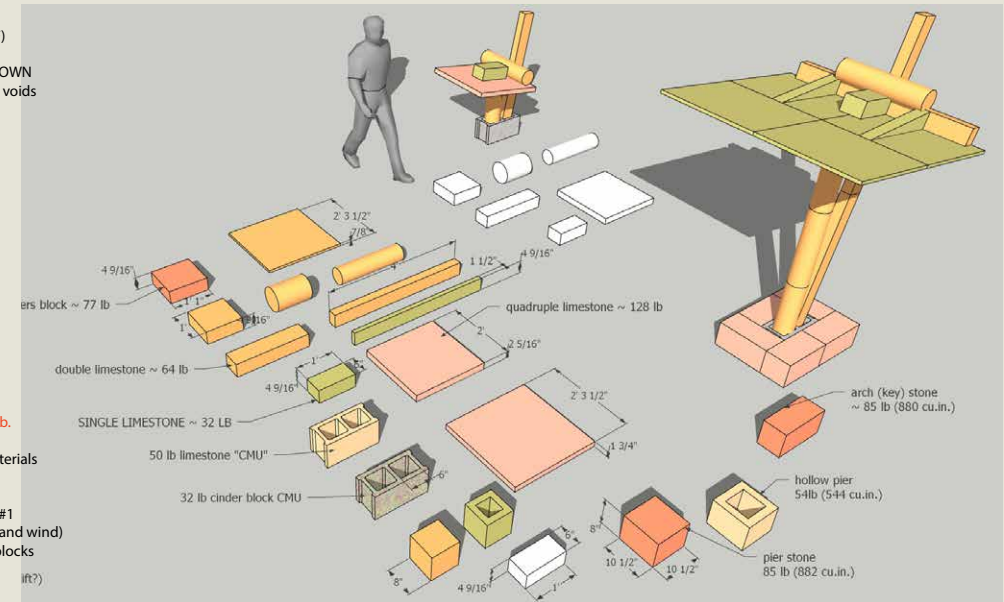
limestone
 volume and weight--
 rough rule of thumb:
 1000 cu.in. ~ 100lb

so 10 cu. in. ~ 1 lb.
 and 27 cu. in. ~ 2.7 lb.
 (3" x 3" x 3") or 3" cube

if fractal structures
 are more like Cantor Dust
 than Menger Sponge,
 then mass/volume > 1/27,
 not 1/2 (as in Menger)
 of original volume.
 So "Cantor Rule" of thumb
 is 1000 cu.in. ~ 100/27 ~ 4lb.
 SEE article Balankin, Toward
 the Mechanics of Fractal Materials

TREE #1
 more properly called Shrub #1
 but it makes its own shade (and wind)
 CMU represents limestone blocks
 with holes cut in them
 note: EACH piece is ~ 32 lb.
 white = limestone

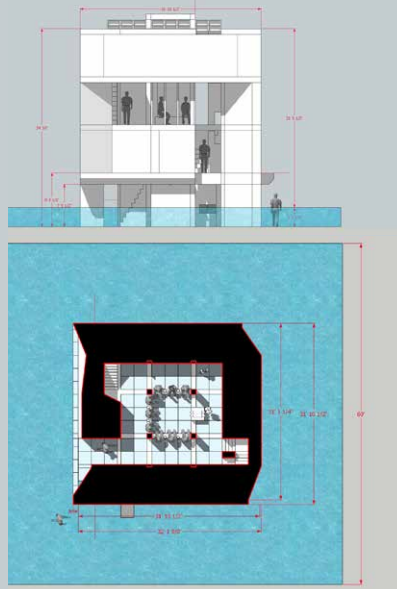
WEIGHTS
 CONCRETE CINDER BLOCK CMU
 gray = CMU
 yellow = equal weight ~ 32 lb
 orange = double weight ~ 64 lb (2 man lift?)
 pink = quadruple weight ~ 128 lb



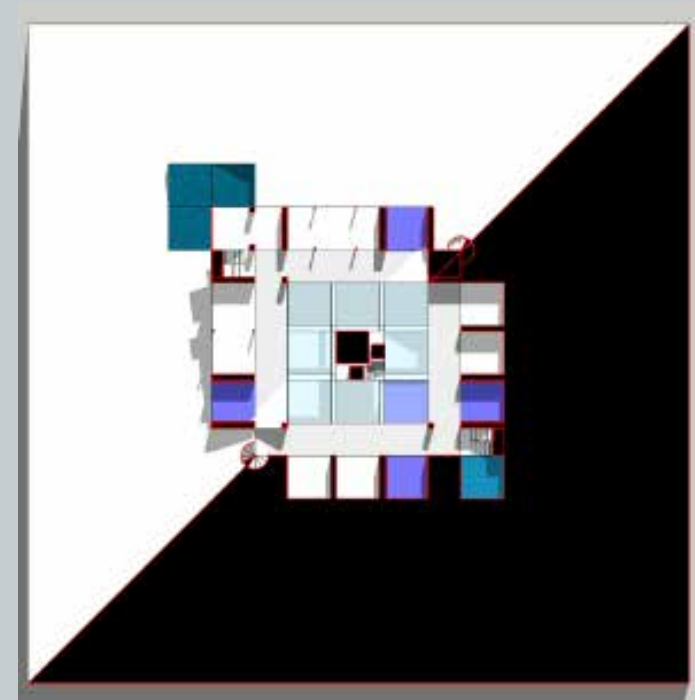
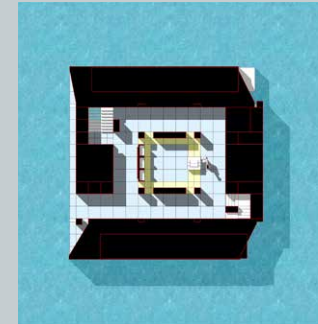
COMPARATIVE "THEOLOGIES"

(vs COMPARATIVE ARCOLOGIES)

ALL AT SAME SCALE

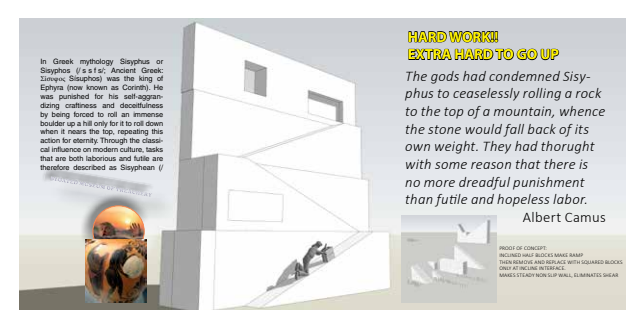
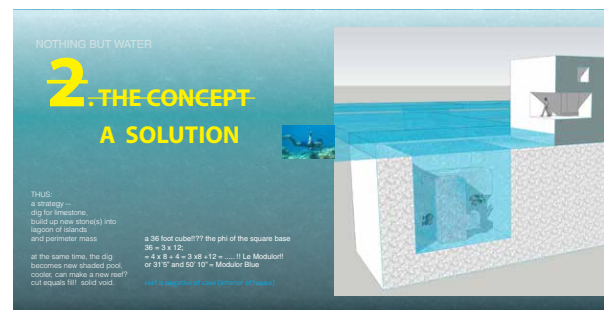
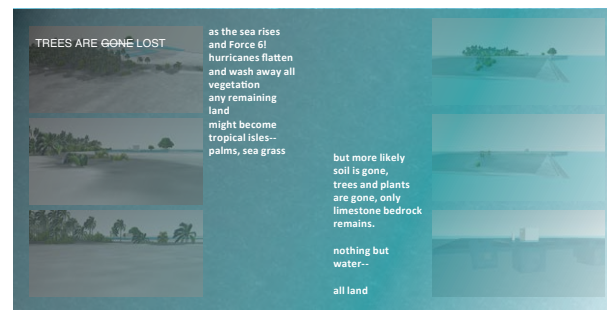
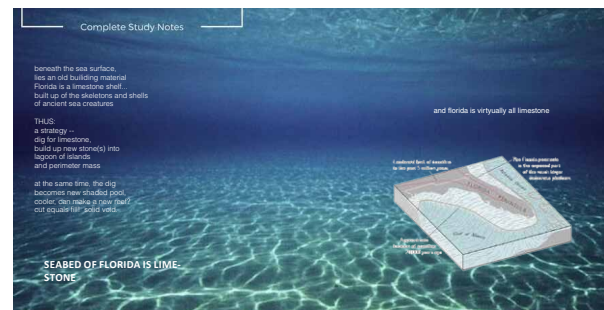
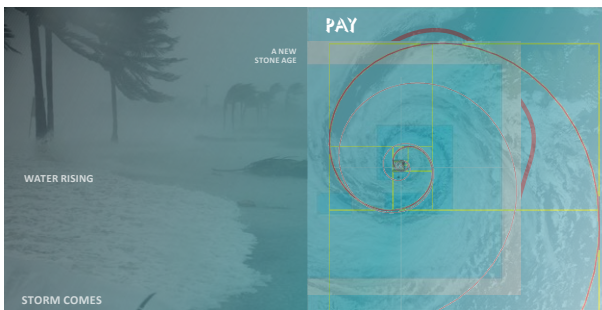
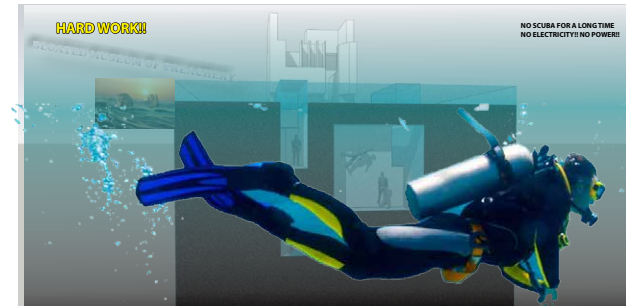
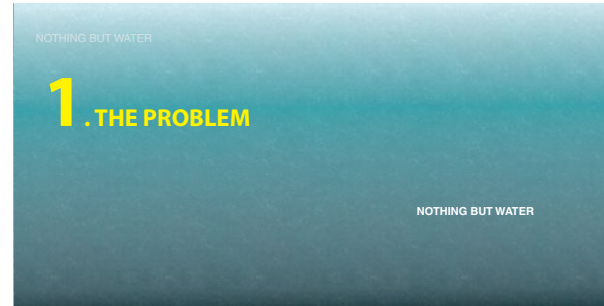


PAY IS A SMALL BUILDING
size of a house, 30' cube
MADE OF HEAVY STONES
HARD WORK! WE MUST PAY!

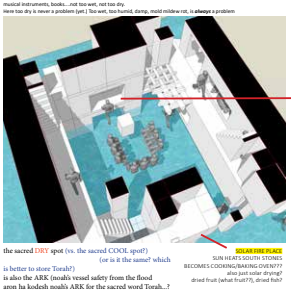


PAY the narrative!!!
tell the story!!!

CATEGORY 6+ STORM. AFTERMATH



A DRYING KILN!! FOR ALL THINGS!!!?



6/16/2019 Fathers Day 8:03 AM

THE DRY PLACE

ZORASTRIAN? THE MOUNTAIN??

MANGROVE PALM TREE FIRE
ONLY AFTER YEARS OF RECOVERY

SCENE DAY...
THE SACRED BARBERS BECOMING??

<https://www.thedrycenter.com/show-to-maintain-a-safet-torah.html>

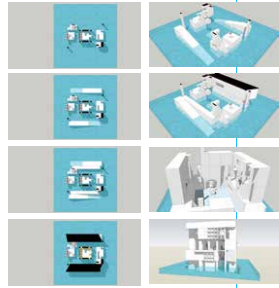
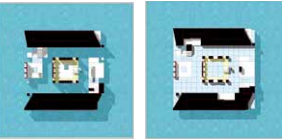
How to maintain a safe Torah

A single word for the Torah and its history for the Jewish people and the world's oldest and most sacred text is the word "Torah". The word "Torah" is derived from the Hebrew word "to teach" or "to instruct". The Torah is the foundation of Jewish law and ethics, and it is the source of the Jewish people's identity and culture. The Torah is a collection of books that contain the laws and customs of the Jewish people, and it is the source of the Jewish people's faith and hope. The Torah is a sacred text that is revered by the Jewish people, and it is the source of the Jewish people's identity and culture. The Torah is a collection of books that contain the laws and customs of the Jewish people, and it is the source of the Jewish people's faith and hope. The Torah is a sacred text that is revered by the Jewish people, and it is the source of the Jewish people's identity and culture.

BOOK CARE TORAH CARE! DRY VS DAMP

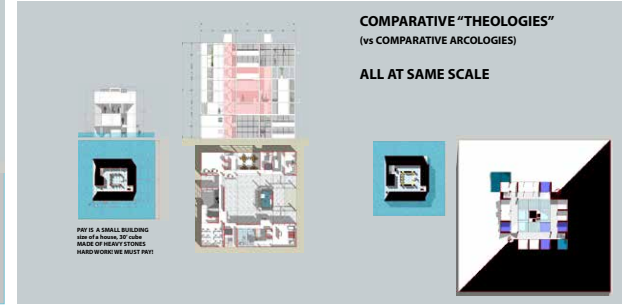
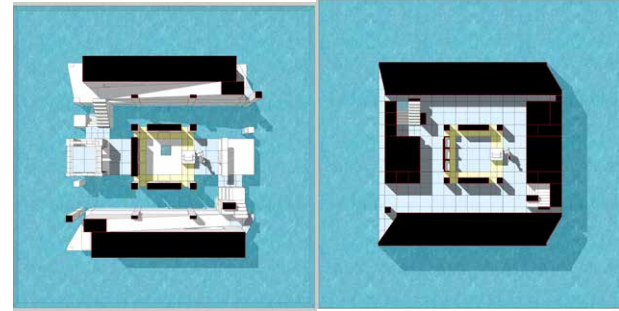
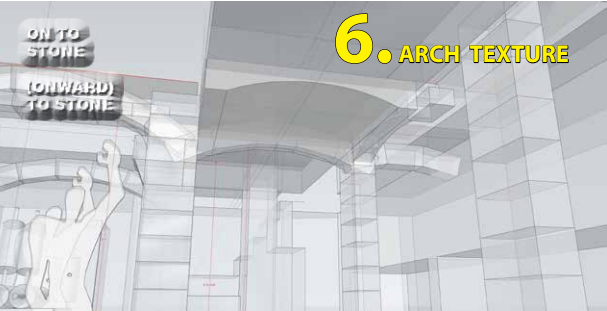
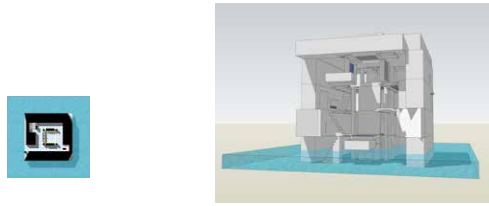
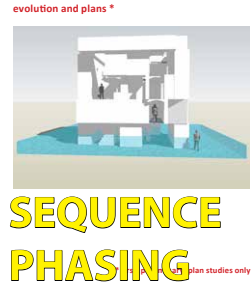
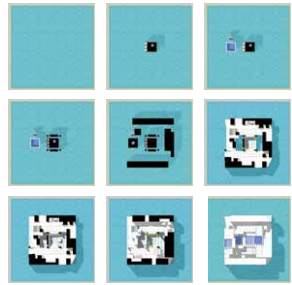
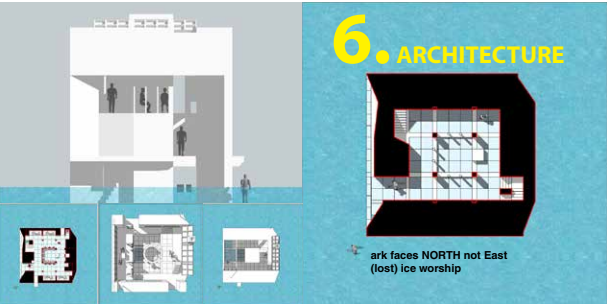


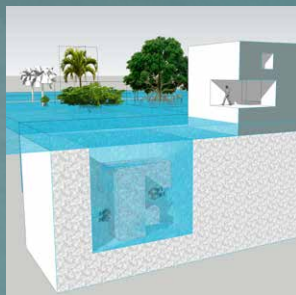
- THE NEXT MAJOR QUESTIONS: (6/16/2019)
1. N and S side? dry/cold vs. dry/warm vs. not too dry/warm? (paper storage, books, Torah, sun-dried foods (figs and ??) eating, cooking, Torah storage, fireplace, music hall - where?
 2. lagoon, ramp?
 3. rain capture and run-off, fresh water storage?
 4. spans vaults arches, floor space in sections? construction? Lifting stones?



LET'S FOOL 'EM

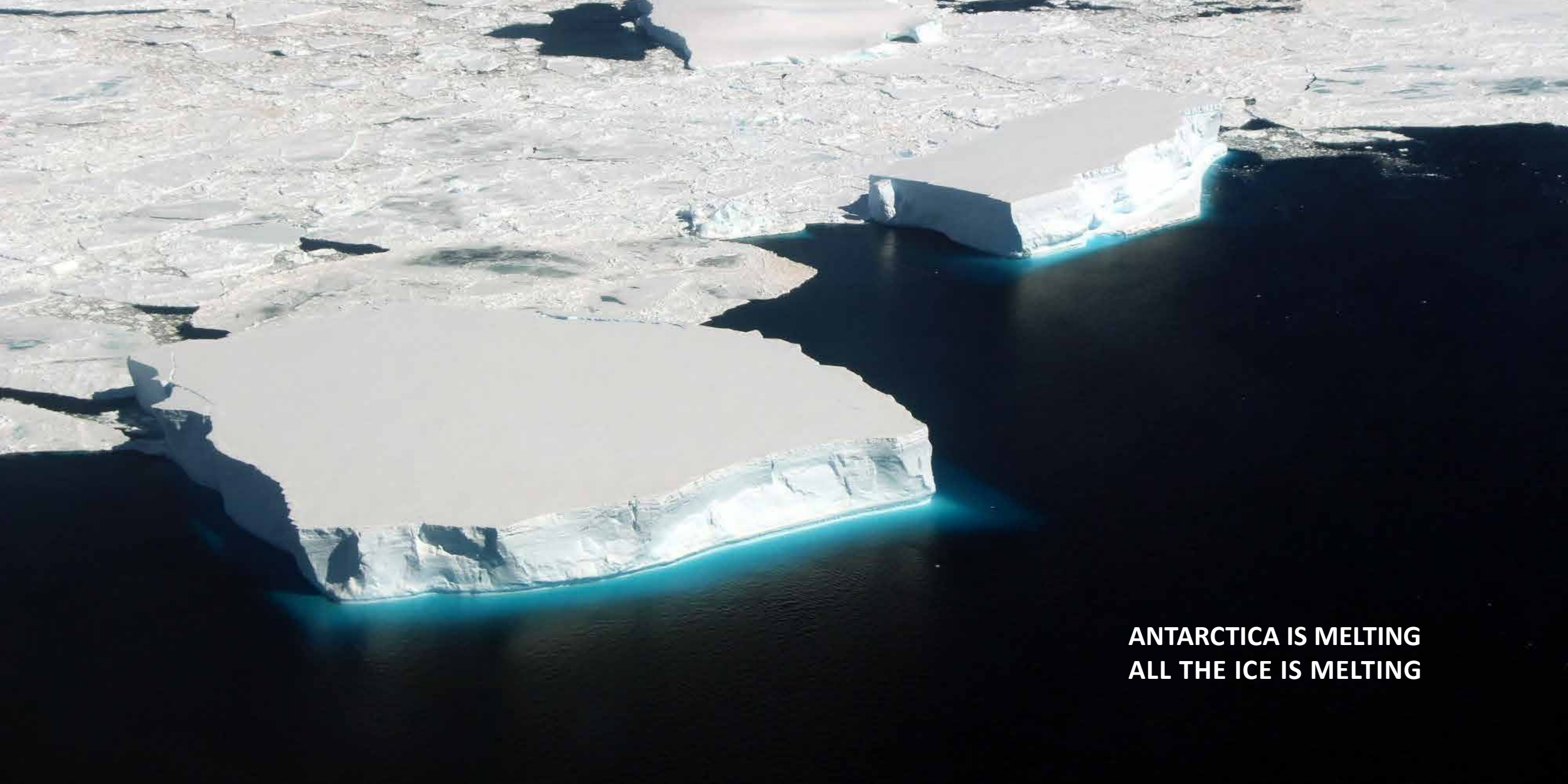
North is now UP (but same plan and site as previous page)... will this disguise/camouflage work, be necessary? Be a good thing?? ... but it does help me to see it.





DOWN THE DRAIN

PAY



**ANTARCTICA IS MELTING
ALL THE ICE IS MELTING**